



SCIENTIFIC and TECHNICAL SERVICES

IPHES-CERCA

Rates 2024

SCT IPHES FEES

FEE FREE

The cost of the services that fit into the casuistry listed below will not be subject to the current rates and will be charged to the projects or budget items associated with the research groups of the center:

- Staff with a contractual relationship with IPHES-CERCA, associated students and honorary staff.
- Users who carry out research derived from IPHES-CERCA projects.
- Undergraduate, Master and PhD students of the Universitat Rovira i Virgili, in the context of the IPHES-URV agreement.

Rate A (INTERNAL-CERCA)

Application:

- Users from centers that make up the CERCAGINYS network (<https://ginys.cerca.cat/>).
- Collaborators and affiliated research IPHES-CERCA personnel who work with material linked to external projects.
- Users from other centers with reciprocity agreements.
- Institutions or entities that have co-financed IPHES-CERCA equipment.

Rate B (PUBLIC EXTERNAL)

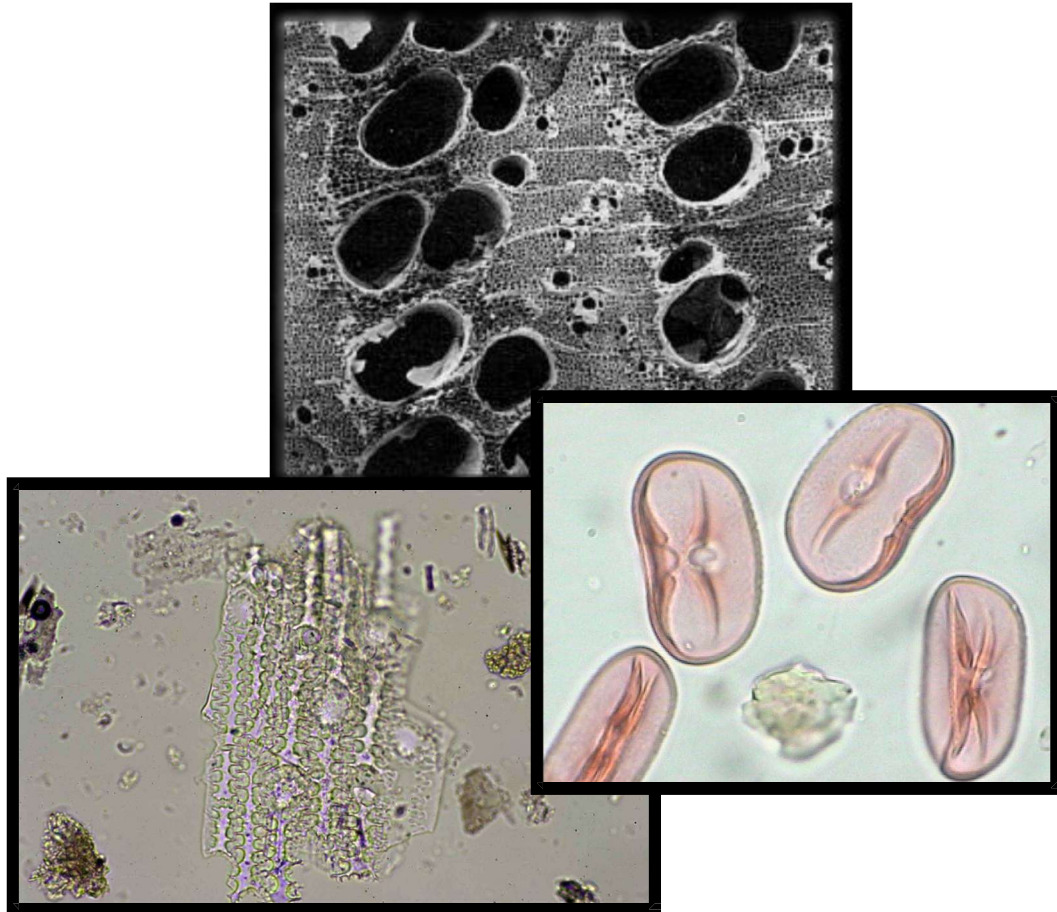
Application:

- Services provided to public institutions such as universities and other public entities.

Rate C (PRIVATE EXTERNAL)

Application:

- Services requested by companies or by any private organization.



ARCHAEOBOTANY

2024

ANTHRACOLOGY

Techniques to apply	Analysis of wood charcoal recovered from archaeological sites
Results to obtain	Identification, enumeration and palaeo-ecological and palaeo-economic significance
Work to be done	<ul style="list-style-type: none"> • Sediment washing • Sample triage • Observation under reflected light optical microscopy • Taxonomic identification by comparative anatomy and reference collections • Report writing

PRICES

SERVICE	RANGES	RATE A IPHES Users and CERCA Centers	RATE B External Public Centers	RATE C External Private Centers
Washing	30 l	235,18 €	258,70 €	282,22 €
	60 l	470,36 €	517,40 €	564,44 €
	90 l	705,55 €	776,10 €	846,66 €
	120 l	873,53 €	960,89 €	1.048,24 €
	150 l	1.091,92 €	1.201,11 €	1.310,30 €
	180 l	1.310,30 €	1.441,33 €	1.572,36 €
	210 l	1.528,69 €	1.681,55 €	1.834,42 €
	240 l	1.747,07 €	1.921,78 €	2.096,48 €
Triage	30 g	235,18 €	258,70 €	282,22 €
	60 g	470,36 €	517,40 €	564,44 €
	90 g	705,55 €	776,10 €	846,66 €
	120 g	873,53 €	960,89 €	1.048,24 €
	150 g	1.091,92 €	1.201,11 €	1.310,30 €
	180 g	1.310,30 €	1.441,33 €	1.572,36 €
	210 g	1.528,69 €	1.681,55 €	1.834,42 €
	240 g	1.747,07 €	1.921,78 €	2.096,48 €

SERVICE	RANGES	RATE A IPHES Users and CERCA Centers	RATE B External Public Centers	RATE C External Private Centers
*Analysis	1h	36,63 €	40,29 €	43,96 €
	2h	73,26 €	80,59 €	87,91 €
	3h	109,89 €	120,88 €	131,87 €
	4h	136,05 €	149,66 €	163,26 €
	5h	170,07 €	187,07 €	204,08 €
	6h	204,08 €	224,49 €	244,90 €
	7h	238,09 €	261,90 €	285,71 €
	8h	272,11 €	299,32 €	326,53 €
Report	1	1.046,56 €	1.151,22 €	1.255,87 €

* The allocation of hours is an estimate. Study hours may vary depending on the specimens recovered.

+ 21% IVA

CARPOLOGY

Techniques to apply	Paleocarpological Analysis (Carpology)
Results to obtain	Knowledge of the plant resources that made up the plant diet of the period studied. Potential of agricultural resources (crops) and resources from gathering.
Work to be done	<ul style="list-style-type: none"> • Sediment washing • Sample triage • Identification with binocular • Report writing

PRICES

SERVICE	RANGES	RATE A IPHES Users and CERCA Centers	RATE B External Public Centers	RATE C External Private Centers
Washing	30 l	235,18 €	258,70 €	282,22 €
	60 l	470,36 €	517,40 €	564,44 €
	90 l	705,55 €	776,10 €	846,66 €
	120 l	873,53 €	960,89 €	1.048,24 €
	150 l	1.091,92 €	1.201,11 €	1.310,30 €
	180 l	1.310,30 €	1.441,33 €	1.572,36 €
	210 l	1.528,69 €	1.681,55 €	1.834,42 €
	240 l	1.747,07 €	1.921,78 €	2.096,48 €
Triage	30 g	235,18 €	258,70 €	282,22 €
	60 g	470,36 €	517,40 €	564,44 €
	90 g	705,55 €	776,10 €	846,66 €
	120 g	873,53 €	960,89 €	1.048,24 €
	150 g	1.091,92 €	1.201,11 €	1.310,30 €
	180 g	1.310,30 €	1.441,33 €	1.572,36 €
	210 g	1.528,69 €	1.681,55 €	1.834,42 €
	240 g	1.747,07 €	1.921,78 €	2.096,48 €

SERVICE	RANGES	RATE A IPHES Users and CERCA Centers	RATE B External Public Centers	RATE C External Private Centers
*Analysis	1h	36,63 €	40,29 €	43,96 €
	2h	73,26 €	80,59 €	87,91 €
	3h	109,89 €	120,88 €	131,87 €
	4h	136,05 €	149,66 €	163,26 €
	5h	170,07 €	187,07 €	204,08 €
	6h	204,08 €	224,49 €	244,90 €
	7h	238,09 €	261,90 €	285,71 €
	8h	272,11 €	299,32 €	326,53 €
Report	1	1.046,56 €	1.151,22 €	1.255,87 €

* The allocation of hours is an estimate. Study hours may vary depending on the specimens recovered.

+ 21% IVA

SPECTROPHOTOMETRY IR

Techniques to apply	Method of analysis based on the absorption, reflection or emission of infrared rays by a substance, phenomena related to interatomic vibrations in molecules or crystals
Results to obtain	Identify mineralogical composition and state of alteration
Work to be done	<p>Instrumentation available:</p> <ul style="list-style-type: none"> - Infrared spectrophotometer-Jasco model 680 plus <p>Applications:</p> <ol style="list-style-type: none"> 1. Inorganic characterisation of soils and habitat or storage structures 2. Characterisation of building materials <p>Sample type: Bulk sediment</p>

PRICES

SERVICE	RATE A IPHES Users and CERCA Centers	RATE B External Public Centers	RATE C External Private Centers
Spectrum / Kinetic hour	27,00 €	30,00 €	33,00 €

+ 21% IVA

PHYTOLITHS

Techniques to apply	Analysis of silicon phytoliths
Results to obtain	Vessel contents, ash analysis, palaeoenvironmental restitution, dietary analysis
Work to be done	<ul style="list-style-type: none"> • Sample preparation: physic-chemical treatments in an appropriate laboratory • Volumetric measurement of the residue • Set-up of petrographic microscopy preparation • Determination and counting under optical microscope • Calculations on the number and types of debris • Report writing

PRICES

SERVICE	RANGES	RATE A IPHES Users and CERCA Centers	RATE B External Public Centers	RATE C External Private Centers
Treatment	1-4 samples	81,20 €	89,32 €	97,43 €
	5-8 samples	162,39 €	178,63 €	194,87 €
	9-12 samples	243,59 €	267,95 €	292,30 €
	13-16 samples	301,58 €	331,74 €	361,90 €
Report	1	1.046,56 €	1.000,52 €	1.091,47 €

+ 21% IVA

PALYNOLOGY

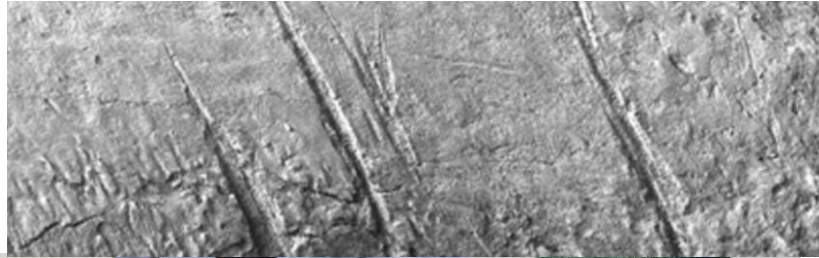
Techniques to apply	Palynological Analysis (Palynology)
Results to obtain	Palaeo-vegetational and palynofacies restitution. Knowledge of the vegetal landscape of the period studied, deduction of the climate, potential forest and agricultural resources, livestock aspects and characterisation of archaeological levels (correlation, archaeo-stratigraphy, genesis of the deposit, etc.).
Work to be done	<ul style="list-style-type: none"> • Sample preparation: physical and chemical treatments for the extraction of the pollen and spores content of the sample. • Volumetric measurement of the residue • Set-up of the biological microscopy preparation • Determination and counting with optical microscopy • Statistical calculations • Preparation of the report

PRICES

SERVICE	RANGES	RATE A IPHES Users and CERCA Centers	RATE B External Public Centers	RATE C External Private Centers
Treatment	1-8 samples	328,98 €	361,88 €	394,78 €
	9-16 samples	657,97 €	723,77 €	789,56 €
	17-24 samples	986,95 €	1.085,65 €	1.184,34 €
	25-32 samples	1.315,94 €	1.447,53 €	1.579,13 €
	33-40 samples	1.527,43 €	1.680,17 €	1.832,91 €
	41-48 samples	1.832,91 €	2.016,21 €	2.199,50 €
	49-56 samples	2.138,40 €	2.352,24 €	2.566,08 €
	57-64 samples	2.443,89 €	2.688,27 €	2.932,66 €
	65-72 samples	2.749,37 €	3.024,31 €	3.299,25 €
	65-72 samples	3.054,86 €	3.360,34 €	3.665,83 €
Report	1	1.046,56 €	1.151,22 €	1.255,87 €

- The price for the treatment of more than 72 samples will be provided on request.

+ 21% IVA



OTHER SERVICES

2024

OTHER SERVICES

PRICES

In the case of requests for other services not officially priced, the cost of the service shall be calculated on the basis of the hourly rate of technical and/or research staff.

	RATE A IPHES Users and CERCA Centers	RATE B External Public Centers	RATE C External Private Centers
Researchers hour	36,63	40,29	43,96
Technical staff hour	29,40	32,34	35,28

+ 21% IVA